

Kubus I 157

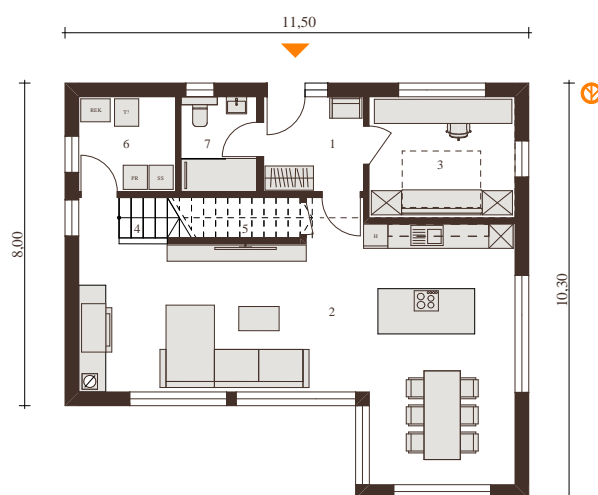
info.hise@jelovica.si

04 275 0324

080 23 23

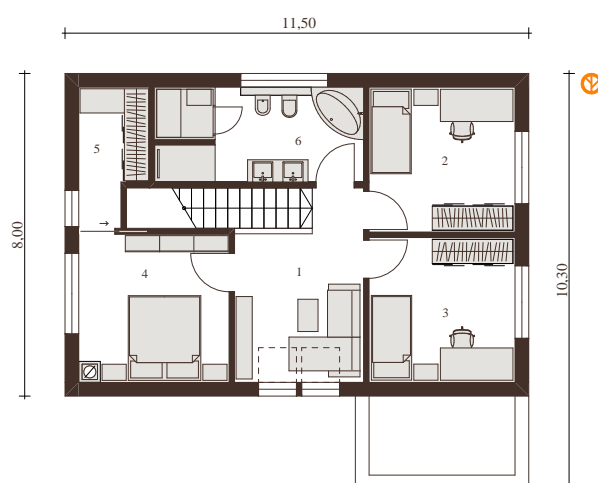


This prefabricated wooden home is an excellent choice for a family seeking the comfort of large spaces, plenty of natural light and modern architecture.



Ground floor

1	Anteroom	5.82 m ²
2	Living area	52.56 m ²
3	Office and wardrobe	10.86 m ²
4	Staircase	4.79 m ²
5	Pantry	3.59 m ²
6	Utility	5.6 m ²
7	Bathroom	4.19 m ²
		87.42 m²



First floor

1	Common space	13.23 m ²
2	Room	13 m ²
3	Room	13 m ²
4	Bedroom	13.41 m ²
5	Wardrobe	5.31 m ²
6	Bathroom	11.63 m ²
		69.57 m²